


Neighborhood Units 101

The Basics

- Neighborhood Units (NUs) are SCU owned houses in the neighborhoods bordering the university
- There are 16 properties total, with a variety of rooming options (see back).
- You can apply as an individual or as a group
- To be eligible to live in a NU, you must:
 - be a rising Junior or Senior (full time student)
 - be in good disciplinary standing
 - participate in  Off Campus Housing Orientation sessions. These sessions will run in October and November. They are announced through both the ASG emails and the Housing website (see QR code). Every person must attend all 4 OCHO sessions by 4/2/2020 to maintain eligibility.

The Basic Timeline

- October 21st: application opens for returning and new applicants
- November 1st: updated list of available NUs is posted
- November 4th: application closes for returning applicants and new applicants
- November 20th: returning applicants will receive confirmation of NU placement
- April 2nd: deadline to complete OCHO sessions



The Financials

- Room charges are billed quarterly to each student's Bursar account:
 - DOES include utilities (except cable and internet)
 - DOES include the apartment mean plan (required)

Financial Benefits:

- You avoid the giant security deposit. With NUs, as a part of the application, students will submit a \$500.00 housing pre-payment deposit, which will then be applied to the Fall quarter bill.
- 9 month lease vs. 12 month lease
- Your financial aid package and scholarships can go toward these costs since they are listed on your tuition bill as with on-campus housing. If a resident is determined to be responsible for damages or extra cleaning at the end of the contract, these costs will be charged to the resident's Bursar account.

FAQs

- How are NU placements made?
 - The selection process for the 2021-2022 school year will be based on a random lottery system. However Returners are given priority to apply for their CURRENT unit.
- What if I don't get into the NU I wanted?
 - If you do not get into an NU or the NU you wanted, you are still eligible to apply for on-campus communities or the Villas during the Winter Quarter. If you wish to find additional options off campus, visit our Off Campus Living page to check out the apartment listings we've compiled and rental listings we've tried to vet for you!

For more info, use the QR code to explore NU FAQs:



Welcome to the Neighborhood... Units!

507 Lafayette St

4 Bedroom Unit
Max Occupancy: 8 people



529 Lafayette St

2 Bedroom Unit
Max Occupancy: 5 people



536 Alviso St

3 Bedroom Unit
Max Occupancy: 6 people



541 Alviso St

2 Bedroom Unit
Max Occupancy: 4 people



543 Alviso St

1 Bedroom Unit
Max Occupancy: 2 people



544 Alviso St

3 Bedroom Unit
Max Occupancy: 7 people



564 Alviso St

2 Bedroom Unit
Max Occupancy: 4 people



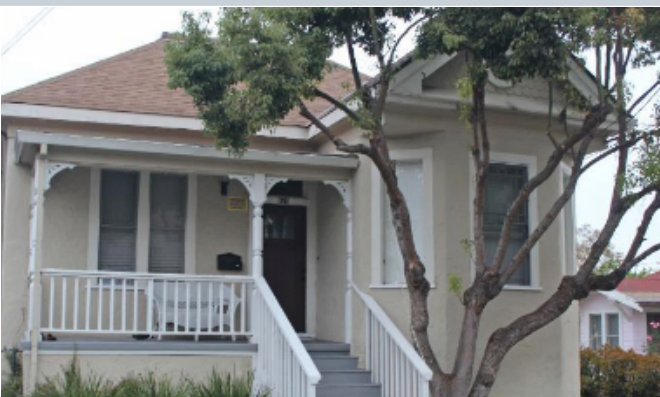
575 Alviso St

6 Bedroom Unit
Max Occupancy: 8 people



671 Franklin St

3 Bedroom Unit
Max Occupancy: 6 people



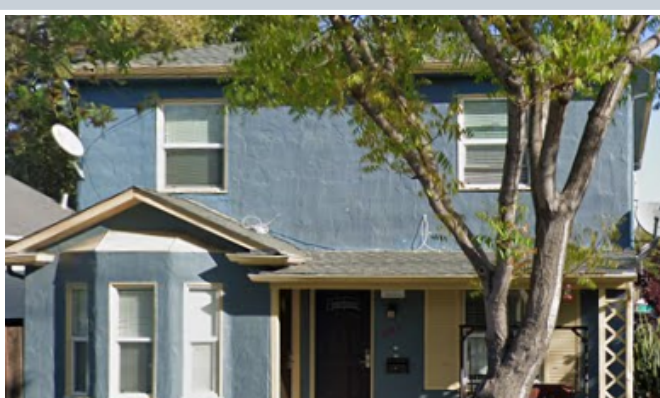
775 Bellomy St

1-2 Bedroom Units
Max Occupancy: 4 people
9 Apartments



805 Bellomy St

7 Bedroom Unit
Max Occupancy: 9 people



819 Bellomy St.

3 Bedroom Unit
Max Occupancy: 5 people



831 Bellomy St

3 Bedroom Units
Max Occupancy: 4 people



841 Bellomy St

1-3 Bedroom Units
Max Occupancy: 7 people
5 Apartments



845 Bellomy St

2 Bedroom Units
Max Occupancy: 4 people



857/859 Bellomy St

5 Bedroom Units
Max Occupancy: 8 people



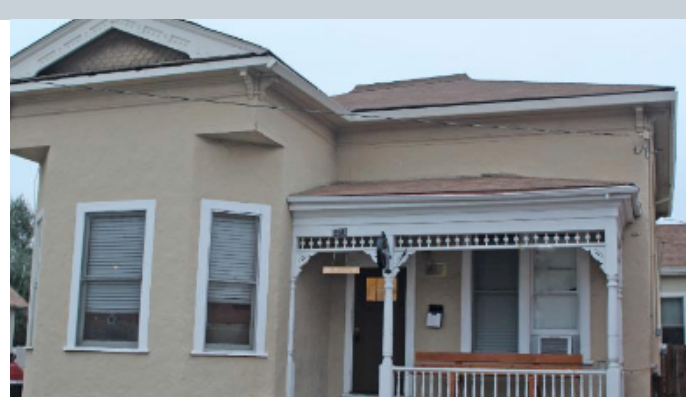
889 Bellomy St

2 Bedroom Units
Max Occupancy: 4 people



3210 The Alameda

5 Bedroom Units
Max Occupancy: 8 people



Questions?

Contact us at neighborhoodambassadors@scu.edu
Visit us at 862 Market St.