

# Getting to Know EO/Title IX

2025





# THE TEAM



**Brandi Williams,  
M.A.**

Interim Director/  
Title IX Coordinator

She/Her

bwilliams2@scu.edu



**Jess Ward,  
Ph.D.**

Interim Deputy  
Title IX Coordinator

She/They

jward2@scu.edu



**Summer Reid,  
M.P.H.**

Program Manager

She/Her

sreid@scu.edu



# TOPICS

## Scope

What is our office responsible for?

## Supportive Measures

What can we do to support you?

## Reporting

How do you report an incident and what will happen?

## Questions

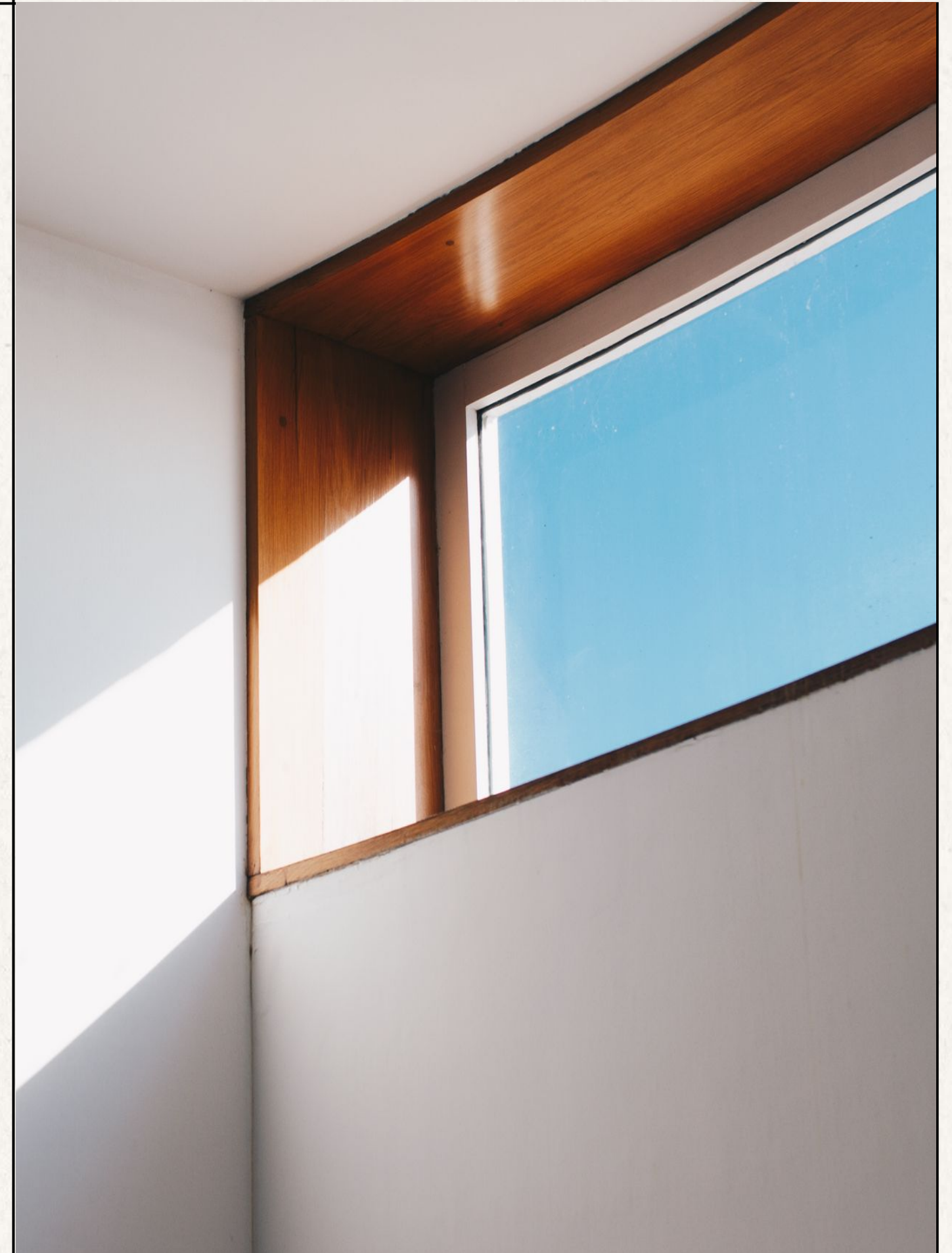




## **Content Advisory**

The content in this presentation will necessarily engage with sex- and gender-based harassment, discrimination, and violence that can evoke strong emotional responses.

Please do what you need to take care of yourself. A confidential advocate is available if you would like to talk.







# What does our office do?

1. Oversees compliance
2. Provides information
3. Coordinates supportive measures
4. Investigates reports
5. Resolves formal complaints





# COMPLIANCE



**Santa Clara University**

# DISCRIMINATION, HARASSMENT, AND SEXUAL MISCONDUCT POLICY

## Response and Resolution Procedures

## INTERIM POLICY

# Civil Rights Law

# University Policy



# Reporting FAQ



Does a report automatically mean parents are notified?

No.

Does a report automatically mean an investigation starts?

No.

Does it mean the respondent will be notified?

No.

Will law enforcement be automatically involved?

No.



# Who reports to us?



1. Impacted parties
2. Friends and Classmates
3. Witnesses
4. Parents
5. Campus Safety
6. University Employees\* are Responsible Employees

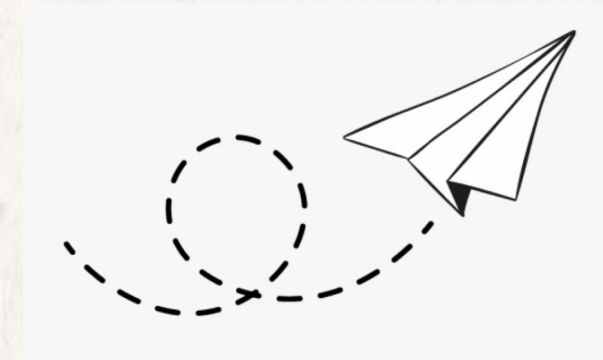
\*Exceptions:

1. Wellness Center Staff
2. Counselors/Therapists
3. Clergy



# How to Report & Request Support

1. Online reporting form
2. Email or phone
3. In person, at our office



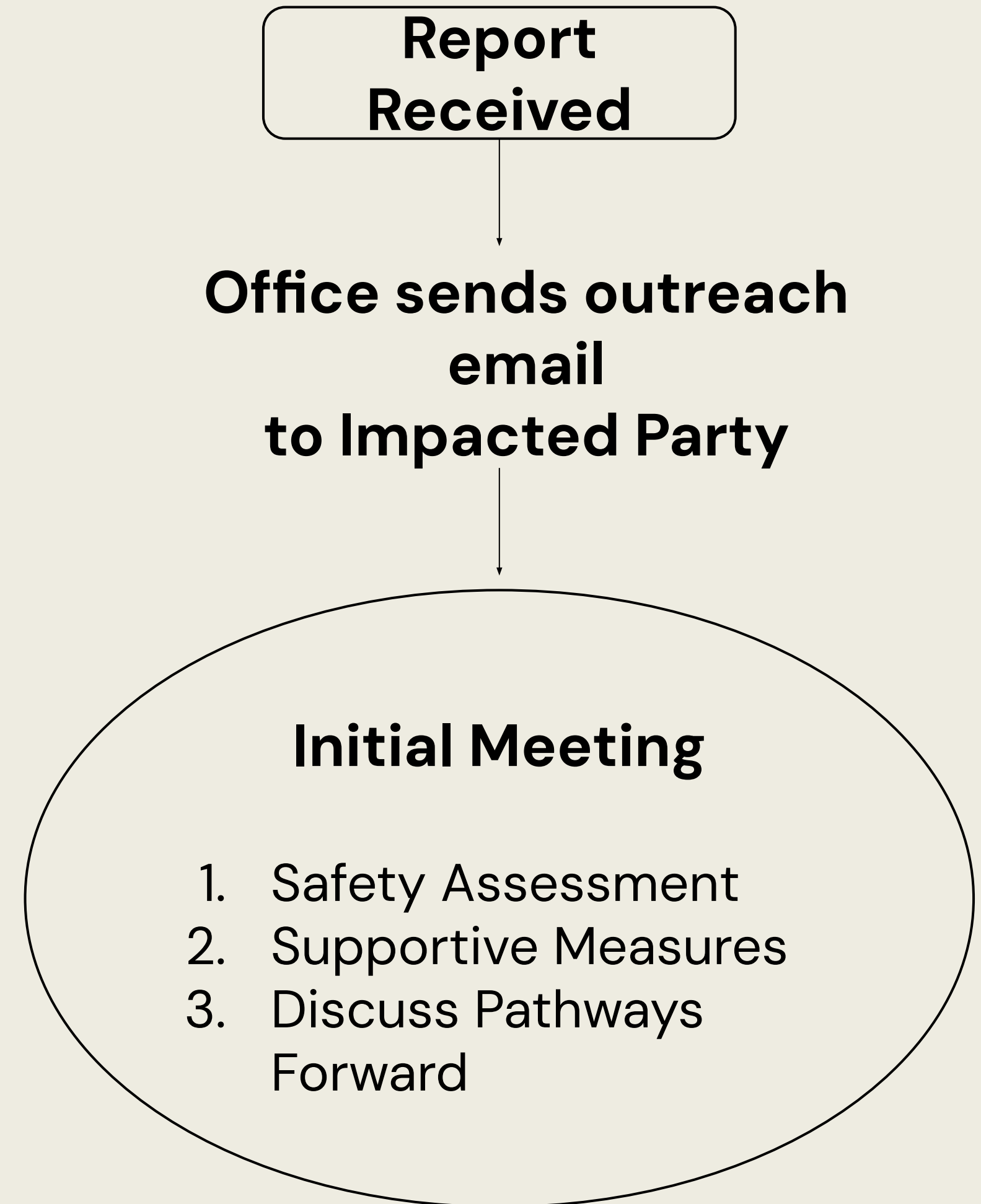
Phone: (408) 551-3043

Email: [titleixadmin@scu.edu](mailto:titleixadmin@scu.edu)

Walk-in: Loyola Hall  
(Suite 140)



**What happens when  
you or someone else  
contacts our office?**





# Examples of Supportive Measures

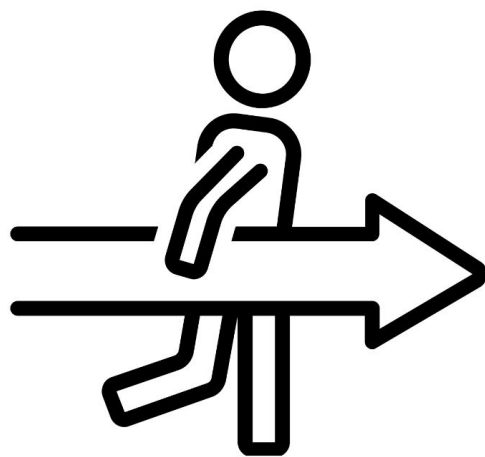
- Wellness Center (e.g., Survivor Support and Advocacy)
- Counseling services
- Safety Planning
- Mutual No-Contact Directive
- Faculty/Supervisor Notifications
- Modification of work, class, exam schedules
- Housing modifications
- Campus Safety (CSS) escorts and other safety resources
- And more...





# A Pathway Forward

Formal Complaint + Investigation



Complainant has the  
choice\*

Meet with TIXC, if needed,  
to correctly complete and  
file Formal Complaint.

TIXC notifies Respondent of  
allegations

Investigation begins



# Consent is permission that is:

CONSCIOUS

KNOWING

VOLUNTARY

CLEAR

## Can a person consent if they...

- are unable to understand what is happening?
- are disoriented?
- are helpless?
- are asleep?
- are unconscious?

Can consent be withdrawn?	YES
Can consent to some sexual contact (such as kissing) be presumed to be consent for other sexual activity?	NO
Is a current or previous relationship sufficient to constitute consent?	NO



# Questions?

**EO/Title IX Office:**

[titleixadmin@scu.edu](mailto:titleixadmin@scu.edu)

Loyola Hall, Suite 140

(corner of El Camino Real and The Alameda)

