

3. GTU, JST/SCU, and Local Resources

<u>JST/SCU Contact Quick-Guide</u>	37
<u>GTU Member Schools</u>	41
<u>GTU Centers of Distinction</u>	41
<u>Map of GTU</u>	44
<u>Places of Worship</u>	46
<u>Recreation Resources</u>	48
<u>Mental Health Resources</u>	49
<u>JST's Physical Facilities</u>	50
<u>Map of JST</u>	51
<u>Student Life and Formation</u>	53
<u>Spiritual Formation</u>	54
<u>Ministerial Formation</u>	55
<u>Liturgical Formation</u>	56
<u>Pastoral Formation</u>	57
<u>Human and Intellectual Formation</u>	57
<u>Sustainability</u>	57
<u>Disability Resources</u>	58
<u>Title IX</u>	58
<u>Communications, Social Media and Student Life</u>	59
<u>Safety on Campus</u>	61
<u>Student Employment at JST-SCU</u>	62
<u>Career Services</u>	63

JST/SCU Contact Quick-Guide

Jesuit School of Theology Offices

Academic Operations Specialist.....Mey Saechao

msaechao@scu.edu

510-549-5012

Room 221

Contact for concerns about course scheduling and evaluations; classroom scheduling; contacting adjuncts and instructors; and student research assistant questions. Contact to make an appointment with the Interim Dean, Alison Benders.

Admissions & Scholarship Aid Specialist.....Laura Nieto

lnieto@scu.edu

Room 330

Contact for scholarship and application information. Please make appointment via email.

Administrative Assistant for Finance & Administration Jasmine Allen

jnallen@scu.edu

510-549-5000

Reception Desk

Contact for assistance with Wi-Fi and to reserve a meeting room in the school building.

Assistant Director of Housing and Building OperationsTanisha Sparks

tsparks@scu.edu

510-549-5071

Room 225

Contact for housing information.

Assistant Dean of StudentsPaul Kircher

pkircher@scu.edu

510-549-5029

Room 105

Contact for Student Life, student services, liturgy and school community life.

Career Advisor.....Clare Ronzani, M.A.

cronzani@scu.edu

510-549-5009

Room 206

Contact for assistance with career advising and full-time job placement.

Interim Dean..... Alison Benders, J.D., Ph.D.

ambenders@scu.edu

510-549-5040

Room 220B

Please make an appointment to see Alison Benders with Dianna Gallagher:

dgallagher@scu.edu.

Director of Acad. Advising & Support ServicesAmanda Kaminski, Ph.D.

akaminski@scu.edu

510-549-5072

Room 329

Contact for Online MTS program; also provides support in critical composition and research, writing coaching, and academic assistance through one-on-one Oxford-style tutoring.

Director of Hispanic Institute Teresa Montes
mmonteslara@scu.edu 510-549-5020 Room 224

Director of Ministerial Formation Deborah Ross, Ph.D.
dross@scu.edu 510-549-5025 Room 101

Contact for information regarding ministerial formation and field education.

Director of Renewal Program/Field Ed Supervisor Carrie Rehak, Ph.D.
crehak@scu.edu 510-549-5011 Room 104

Contact for information regarding renewal program or field education.

Director of Spiritual Formation..... George R. Murphy, S.J., Ph.L.
grmurphy@scu.edu 510-549-5018 Room 102

Contact for information about spiritual direction, days of reflection, and the 19th annotation.

Finance and Accounting Associate Thanh Vo
gvo@scu.edu 510-549-5044 Room 227

Contact for questions about finances, and paying rent and tuition.

Registrar Jim Oberhausen
joberhausen@scu.edu 510-549-5014 Room 220E

Contact for registering, upgrading courses, transferring credits, transcripts, and deferral signatures and other academic requirements. Contact Program Director for advising questions.

Sr. Admin. Asst. for Student Life & Formation Mary Beth Lamb
melamb@scu.edu 510-549-5017 Room 107

Contact for questions about health insurance, registering for retreats and workshops, posting flyers on bulletin boards, and scheduling events.

Sr. Director of Academic Administration..... Ed Stewart
ejstewart@scu.edu 510-549-5055 Room 220 D

Please make an appointment with Mey Saechao: msaechao@scu.edu. Contact for issues regarding a class, advisor, professor or program director. Also contact for information about transferring from other universities, switching degree programs, and for questions about leaves of absence.

Academic Program Directors

Common MA (GTU)	Thomas Cattoi
tcattoi@scu.edu	(510) 549-5005 Room 103
Doctorate in Sacred Theology (STD)	Eduardo Fernandez, S.J
efernandez@scu.edu	(510) 549-5026 Room 214
Licentiate in Sacred Theology (STL)	Paul Janowiak, S.J
pjanowiak@scu.edu	(510) 549-5032 Room 204
Master of Divinity (MDiv)	Christopher Hadley, S.J
chadley@scu.edu	(510) 549-5015 Room 213
Master of Theology (ThM)	Thomas Cattoi
tcattoi@scu.edu	(510) 549-5005 Room 103
Master of Theological Studies (MTS-On campus)	Thomas Cattoi
tcattoi@scu.edu	(510) 549-5005 Room 103
Master of Theological Studies (MTS-Online)	Amanda Kaminski
akaminski@scu.edu	(510) 549-5072 Room 329

Santa Clara University Offices

Campus Ministry

Associate Director	Julia Claire Santos
jcsantos@scu.edu	408-554-2796 Benson Center
Director of Retreats	Victor Lemus
vlemus@scu.edu	408-551-3431 Benson Center

Graduate Student Minister and Spirituality Facilitators	Alyse Hudock
ahudock@scu.edu	408-554-2796 Benson Center

Cowell Center Counseling and Psychological Services (CAPS)

408-554-4501 Cowell Center

Office of Accessible Education, Accommodations Coordinator

oe@scu.edu

408-554-4109

Benson Center, Room 216

Health Insurance Coordinator..... Pat Sandvick

psandvick@scu.edu

408-554-2379

Cowell Center

Information Desk

408-554-4000

Benson Center, East Lobby

Information Technology Help Desk

helpdesk@scu.edu

408-554-5700

Learning Commons/Library

International Student Services..... Susan Peters

iss@scu.edu

408-551-3019

Varsi Hall, Room 155

Library

Library Help Desk

408-554-5020

Associate University Librarian.....Nicole Branch

nbranch@scu.edu

408-554-5436

One Stop Enrollment

onestop@scu.edu

408-551-1000

Enrollment Services Center

Student Employment Manager.....Mariela Rodriguez

m2rodriguez@scu.edu

408-554-5488

Human Resources

GTU Member Schools

The American Baptist Seminary of the West (ABSW)

2606 Dwight Way, Berkeley, CA 94704 510-841-1905; 510-841-2446 (fax)

Church Divinity School of the Pacific (CDSP) (Episcopal)

2451 Ridge Road, Berkeley, CA 94709 510-204-0700; 510-644-0712 (fax)

Dominican School of Philosophy & Theology (DSPT)

2301 Vine Street, Berkeley, CA 94708 510-849-2030; 510-849-1372 (fax)

Graduate Theological Union (GTU)

2400 Ridge Road, Berkeley, CA 94709 510-649-2400; 510-649-1417 (fax)

Admissions..... 800-826-4488

Financial Aid..... 510-649-2469; 510-649-1730 (fax)

Library 510-649-2500

Jesuit School of Theology of Santa Clara University (JST)

1735 Le Roy Avenue, Berkeley, CA 94709 510-549-5000; 510-841-8536 (fax)

Pacific Lutheran Theological Seminary (PLTS)

2000 Center Street, Suite 200 Berkeley, CA 94704 800-235-7587, 510-524-2408 (fax)

Pacific School of Religion (PSR) (Inter-denominational)

1798 Scenic Avenue, Berkeley, CA 94709 510-849-8200; 510-845-8948 (fax)

San Francisco Theological Seminary (SFTS) (Presbyterian)

105 Seminary Road, San Anselmo, CA 94960 415-451-2800; 415-258-1608 (fax)

Starr King School for the Ministry (SKSM) (Unitarian Universalist)

2441 Le Conte Avenue, Berkeley, CA 94709 510-845-6232, 510-845-6273 (fax)

GTU Centers of Distinction

More than a dozen academic centers, programs and affiliates make the Graduate Theological Union a pioneering place for interdisciplinary religious thought, study and practice, adding to its unparalleled depth of faculty and course selection.

The [Asia Project](#) seeks to transform theological education by addressing Asian theologies and contexts. It furthers GTU's mission to educate students for teaching, research, ministry and service – preparing future global leaders with knowledge of Asian theologies.

The [Black Church/Africana Religious Studies Program \(BC/ARS\)](#) is an initiative to investigate the Black Church situated within the broader spatial/temporal framework of African American Religion that encompasses West Africa, the Caribbean, Latin America and North America. A certificate is available for graduate students at GTU and its member schools.

The [Center for the Arts & Religion \(CARE\)](#) promotes scholarship, reflection and practice in the arts and religion to serve the Graduate Theological Union and to benefit the broader community.

The [Mira and Ajay Shingal Center for Dharma Studies \(CDS\)](#) represents the leading edge in interdisciplinary and interfaith academic programs of the Hindu world. Highlighting theology, ethics, spiritual paths, world engagement, and the in-depth study of ancient, classical, and contemporary Hindu texts, thought, and practice, the CDS offers the vast richness of the Hindu world to scholars and students of these and other traditions.

The [Center for Islamic Studies \(CIS\)](#) educates scholars and students of Islam and other faiths about the richness of the Islamic tradition and the diversity of Muslims. The Center for Islamic Studies generates innovative research and scholarship on Islamic texts and traditions in contemporary contexts and emphasizes study and dialogue within and across religious traditions, where pluralism, interreligious understanding, and public engagement are the basis of scholarship and service.

The [Richard S. Dinner Center for Jewish Studies \(CJS\)](#) is a premier center for the advanced study of Jewish history, literature, and culture. Their programs combine rigorous text-study of primary sources with distinctive interdisciplinary approaches. Studies at CJS provide training for those preparing for academic careers, leadership positions in the Jewish community, as well as pastoral positions in congregations of many religious affiliations. Among the Center's areas of academic focus are modern Jewish literature and culture, Jewish-Christian and Jewish-Islamic relations from late antiquity to modernity, rabbinic Judaism, Jewish mysticism, and Jewish literary studies.

*The [Center for Swedenborgian Studies \(CSS\)](#) has been a graduate school for religious training and scholarship since 1866. CSS Offers courses in numerous disciplines and cross-disciplines, especially theology, the arts, spirituality, history and biblical studies. Emphasizing interreligious engagement, cultural studies and personal spiritual formation, CSS functions as a think-tank for Swedenborgian studies globally and also as the official seminary of the Swedenborgian Church of North America.

The [Francisco J. Ayala Center for Theology and the Natural Sciences \(CTNS\)](#) is a global leader in facilitating and promoting the creative mutual interaction between religion and science. Originally incorporated in 1982 as a not-for-profit organization, this long-time GTU

affiliate became a GTU program unit in 2016. CTNS finds the GTU's diverse, engaged community to be the perfect setting to bridge divides.

*The [Institute of Buddhist Studies \(IBS\)](#) has been affiliated with the GTU since 1985. Also associated with the Buddhist Churches of America, the seminary and graduate school offers a range of graduate-level degree and certificate programs in the entirety of the Buddhist tradition.

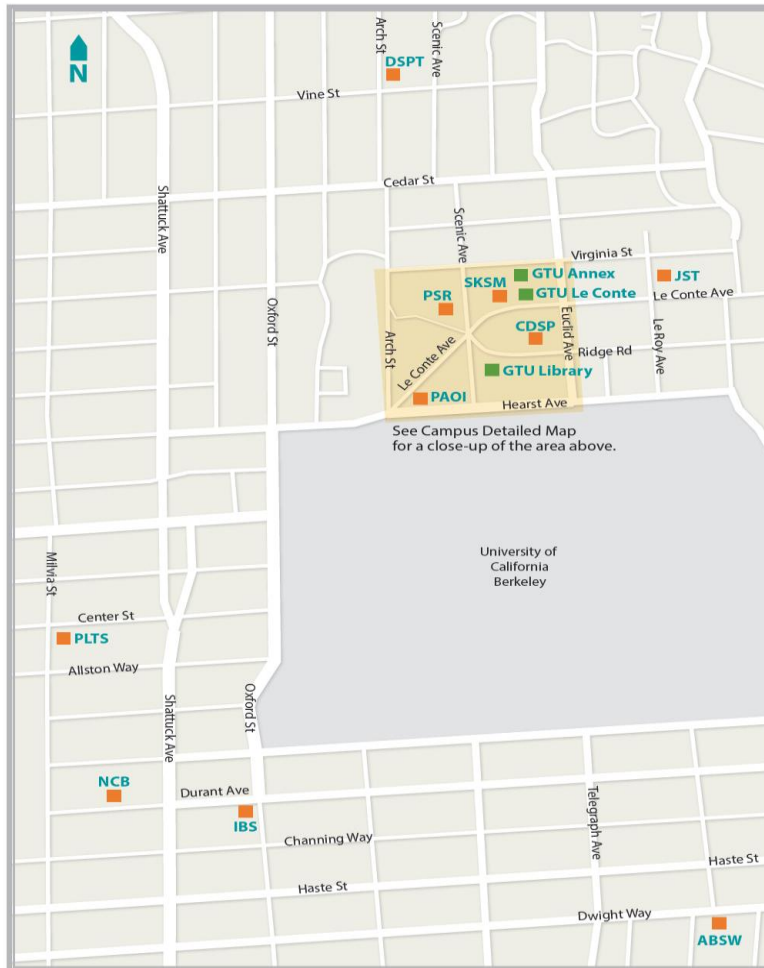
*[New College Berkeley \(NCB\)](#) provides resources for Christians to connect their faith with daily life. In 1992, NCB added its unique voice to the GTU as the only evangelical school in the U.S. connected to both a theological consortium and a major public university.

*The [Patriarch Athenagoras Orthodox Institute \(PAOI\)](#) sponsors the Master of Arts with a specialization in Orthodox Christian Studies at the GTU. The Institute regularly offers lectures and other educational programs throughout the year. It is a "patriarchal institute" under the Ecumenical Patriarchate of Constantinople.

[Women's Studies in Religion Program \(WSR\)](#) affirms the GTU's long-standing commitment to women studies in theology and religion. It builds upon the network of academic and community centers, as well as initiatives established by GTU member schools and affiliates, for the study and support of women in religion. The program recognizes the innovative work contributed by women faculty in theological and religious disciplines.

*GTU affiliate

Map of GTU



Graduate
Theological
Union

Berkeley Locations

GTU Flora Lamson Hewlett Library ■
2400 Ridge

GTU Le Conte Building ■
Center for Jewish Studies (CJS)
Center for the Arts & Religion (CARE)
Doug Adams Gallery
Student Services
2465 Le Conte

GTU Annex ■
Center for Islamic Studies (CIS)
Center for Dharma Studies (CDS)
Center for Theology and the Natural Sciences (CTNS)
2452 Virginia

GTU MEMBER SCHOOLS AND AFFILIATES

American Baptist Seminary of the West (ABSW) ■
2606 Dwight

Center for Swedenborgian Studies (CSS)
1798 Scenic Ave (at PSR)

Church Divinity School of the Pacific (CDSP) ■
2451 Ridge

Dominican School of Philosophy and Theology (DSPT) ■
2301 Vine

Institute for Buddhist Studies (IBS) ■
2140 Durant

Jesuit School of Theology of Santa Clara University (JST) ■
1735 Le Roy

New College Berkeley (NCB) ■
2029 Durant

Pacific Lutheran Theological Seminary (PLTS) ■
2000 Center, Suite 200

Pacific School of Religion (PSR) ■
1798 Scenic Ave.

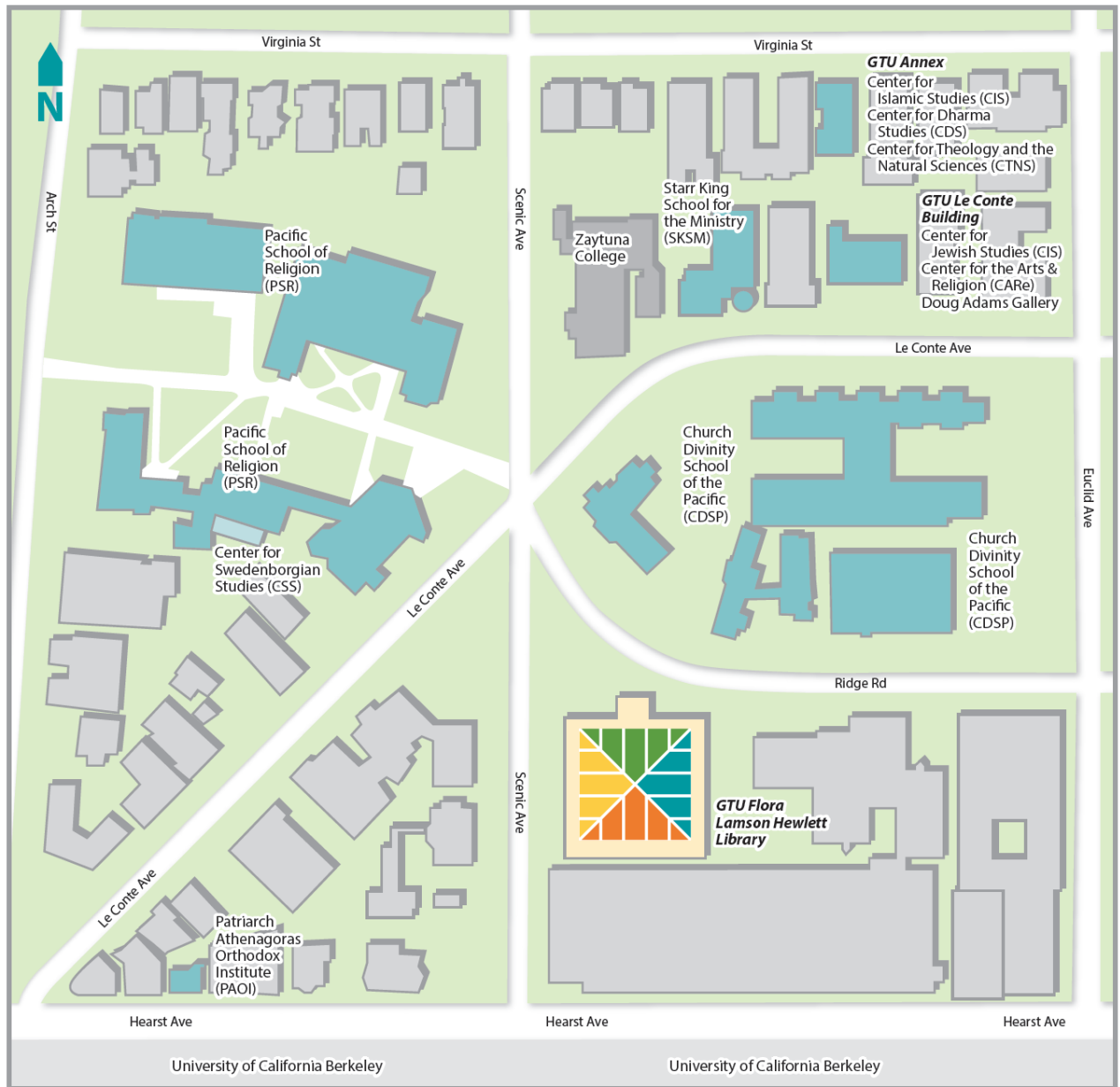
Patriarch Athenagoras Orthodox Institute (PAOI) ■
2311 Hearst

San Francisco Theological Seminary (SFTS)
105 Seminary Rd., San Anselmo (not shown on map)

School of Applied Theology (SAT)
5890 Birch Ct., Oakland (not shown on map)

Starr King School for the Ministry (SKSM) ■
2441 LeConte

<https://www.gtu.edu/maps/berkeley>



Graduate
Theological
Union

Campus Detailed Map

<https://www.gtu.edu/maps/detail>

GTU Flora Lamson Hewlett Library
2400 Ridge

GTU Le Conte Building
Center for Jewish Studies (CJS)
Center for the Arts & Religion (CARE)
Doug Adams Gallery
Student Services
2465 Le Conte

GTU Annex
Center for Islamic Studies (CIS)
Center for Dharma Studies (CDS)
Center for Theology and the
Natural Sciences (CTNS)
2452 Virginia

GTU MEMBER SCHOOLS AND AFFILIATES

Center for Swedenborgian Studies (CSS)
1798 Scenic Ave (at PSR)

Church Divinity School of the Pacific (CDSP)
2451 Ridge

Pacific School of Religion (PSR)
1798 Scenic Ave.

Patriarch Athenagoras Orthodox Institute (PAOI)
2311 Hearst

Starr King School for the Ministry (SKSM)
2441 Le Conte

*See Berkeley Map for the locations of all GTU Member
Schools and Affiliates*

Places of Worship

JST students can be found attending and serving at several many parishes in the [Diocese of Oakland](#). Students can participate in GTU affiliate school liturgies and services. Get information on how to connect with these local spiritual communities by exploring the links below.

<p>Local Parish Communities</p> <p>Newman Hall Holy Spirit Parish 2700 Dwight Way at College Avenue Berkeley, CA 94704 (510) 848-7812</p> <p>St. Joseph the Worker 1640 Addison Street Berkeley, CA 94703 (510) 843-2244</p> <p>Saint Mary Magdalen Parish 2005 Berryman Street Berkeley, CA 94709 (510) 526-4811</p> <p>St. Patrick's 1023 Peralta Street at 10th Street Oakland, CA 94607 (510) 444-1081</p> <p>St. Columba 6401 San Pablo Avenue Oakland, CA 94608 (510) 654-7600</p> <p>Sacred Heart Parish 4025 Martin Luther King Way Oakland, CA 94609 (510) 655-9209</p> <p>Saint Augustine Catholic Church 400 Alcatraz Avenue Oakland, CA 94609 (510) 653-8631</p> <p>St. Leo the Great 176 Ridgeway Avenue Oakland, CA 94611 (510) 654-6177</p>	<p>Our Lady of Lourdes Church 2808 Lakeshore Avenue Oakland, CA 94610 (510) 451-1790</p> <p>The Cathedral of Christ the Light 2121 Harrison Street Oakland, CA 94612 (510) 832-5057</p> <p>GTU Affiliate School Worship Services American Baptist Seminary of the West Clayborne M. Hill Chapel 2606 Dwight Way Berkeley, CA 94704 (510) 841-1905 Service of the Word Mondays, once a month 6:00 pm - 6:45 pm</p> <p>Church Divinity School of the Pacific All Saints Chapel 2451 Ridge Road Berkeley, CA 94709 (510) 204-0700 Open Format Morning Prayer Monday 8:30 am Open Format Evening Prayer Monday, Wednesday 5:30 pm Community Eucharist Tuesday 8:30am; Thursday 5:45 pm Authorized Rite Evening Prayer Tuesday (with music), Friday 5:30 pm Authorized Rite Simple Eucharist Wednesday 8:30 am Authorized Rite Morning Prayer Thursday, Friday 8:30 am</p>
---	---

Please join us each Tuesday at 5:15 PM in Gesù Chapel to celebrate Mass with the JST community.
Mass will be followed by soup supper & programs in Manresa Lounge.

<p><u>Jesuit School of Theology of Santa Clara</u> Gesù Chapel 1735 Le Roy Avenue Berkeley, CA 94709 (510) 549-5000 Eucharist Monday – Friday 8:00 am Tuesday – Friday 5:15 pm Saturday 8:30 am Spanish Mass Every other Wednesday 5:15 pm Liturgy with Lay Presider Once a month on Thursday 5:15 pm</p> <p><u>Pacific Lutheran Theological Seminary</u> Chapel of the Cross 2000 Center Street, Suite 200 Berkeley, CA 94704 (800) 235-7587 Worship in Word and Sacrament Wednesday 11:10 am - 12:00 pm</p> <p><u>Pacific School of Religion</u> Chapel of the Great Commission 1798 Scenic Avenue Berkeley, CA 94709 (510) 849-8200 Labyrinth Meditation Monday 4:30-6:30 pm Chapel Service Tuesday 11:10 am - 12:00 pm Sitting Meditation (Buckham Chapel) Wednesday 5:30-6:00 pm</p>	<p><u>Patriarch Athenagoras Orthodox Institute</u> St. Demetrios Chapel 2311 Hearst Avenue Berkeley, CA 94709 (510) 649-3450 Divine Liturgy Tuesday 6:00 pm - 7:00 pm</p> <p><u>San Francisco Theological Seminary</u> Stewart Chapel (Monday, Thursday) Montgomery Chapel (Tuesday, Friday) 105 Seminary Road San Anselmo, CA 94960 (415) 451-2800 Service of the Word Monday 12:05 pm - 12:35 pm Taizé Service of Prayer Tuesday 12:05 pm - 12:35 pm Worship Lab: Experimental Worship Thursday 12:05 pm - 12:35 pm Service of Word & Sacrament (Communion) Friday 12:05 pm - 12:35</p> <p><u>Starr King School for the Ministry</u> Fireside Room 2441 Le Conte Avenue Berkeley, CA 94709 (510) 845-6232 Chapel Service Tuesday 1:00 pm - 2:00 pm</p>
---	---

Recreation Resources

Berkeley Parks and Recreation

The City of Berkeley has 52 treasured [parks](#) that include athletic fields, swimming pools, tennis and basketball courts, as well as numerous tot lots, gardens, and playgrounds to enjoy.

Hiking

From climbing to the summit of Mount Tamalpais in the North Bay to trekking around nearby Tilden Regional Park, the Bay Area has many natural features the entice that pilgrim's desire to walk and find God in nature. To find out more, visit the [Bay Area Hiker](#) website.

Berkeley YMCA Membership

The [Downtown Berkeley YMCA](#) combines a state-of-the art health and wellness YMCA facility with an historic and friendly environment, located at 2001 Allston Way. GTU students just need to bring their student ID card to the Y to receive a discounted membership, a set rate of \$35.20 per month with no enrollment fee, and no contracts. This rate will be good for two years at a time and can be renewed as long as the student remains enrolled at GTU.

CAL Rec Club Membership

Students are welcome to join the CAL Rec Club. To join, bring a photo ID and your GTU ID card with a current sticker to the Membership Office located at 2301 Bancroft Way. Currently the fee is \$200 a semester. For more information and office hours, call (510) 642-7796 or visit the website at <http://gtu.edu/students/cal-rec-club>.

SCU Campus Recreation

If you are in Santa Clara, your ACCESS card gives you access to many programs through the [Campus Recreation](#) office. The Pat Malley Fitness and Recreation Center, Bellomy Field, Sullivan Aquatic Center, and Degheri Tennis Center are provided free of charge to current Santa Clara University students, Jesuit School of Theology students, faculty, staff and retirees with a valid ACCESS card.

Yoga to the People

This national organization offers donation-based yoga classes with a mission of making yoga available to everyone. The Berkeley location is on Shattuck Square between University and Addison. A \$10 donation is suggested for all classes, but you can contribute as you are able. Sunday nights are candle-lit. For schedules and more information, check their website: <https://yogatothepeople.com/berkeley-ca>.



Mental Health Resources

JST recognizes the importance of mental health for formation and ministry, and encourages students to cultivate wellness, and emotional health and well-being. Paul Kircher, the Assistant Dean of Students, is available to assist with locating counseling or other mental health resources according to students' needs and preferences. Paul can be reached at 510-549-5017, pkircher@scu.edu, or in Office 105 on the ground floor of JST.

The following is a listing of mental health resources:

- **SCU Cowell Center:** All JST students are eligible for mental health care at the SCU **Cowell Center** on the main campus, which offers a full range of psychological services including psychiatry, medication management, individual therapy, and group therapy. It also offers various online resources for **mental wellness**.
- **SCU Health Insurance Coverage:** JST students who are enrolled on the SCU student health insurance with UnitedHealthcare have coverage for mental health. To find mental health providers under the plan, go to <https://www.gallagherstudent.com/scu>, and click "Find a Doctor" under "My Student Health Insurance Plan". Then scroll down and click on the second "Search for Provider" button that will allow you to search for mental health providers in the network. Additional resources for those on the SCU student health insurance include:
 - [SilverCloud Health](#) – a secure, anonymous, online platform offering a suite of programs developed by clinicians to help students think and feel better, addressing depression, anxiety, and stress.
 - **TeleHealth Behavioral** – Professional counseling by licensed therapists available any time via text, chat, telephone, or video conferencing. Log in to your insurance account at uhcsr.com to find this benefit, provided at no cost to you.
- **Other Health Insurance:** Students not enrolled in the SCU student health insurance plan may check with their own insurance provider to see if mental health care is covered.
- **Mental Health Agencies:** For a listing of mental health agencies in the Berkeley area, click [Mental Health Agencies](#). These include agencies with a sliding scale and those that accept SCU insurance.
- **Individual mental health providers:** For a listing of mental health providers in the East Bay, contact the Assistant Dean of Students, Paul Kircher, pkircher@scu.edu.

- **SCU Wellness Center:** The SCU **Wellness Center** has as its main focus risk reduction and early intervention related to alcohol and drug use, the prevention of gender-based violence, and the promotion of student well-being through education, prevention, and outreach services. Check their website for more information and for online mental health resources.

JST's Physical Facilities

Audio-Visual Equipment (projector, screen, video-taping equipment) is available for check out from the front desk for use in the school building. Click to [request to reserve equipment](#).

Computers are available for student use in the downstairs Montserrat Lounge. To access the computer, you will need to use your SCU Network ID and password, which is the same as your SCU email user name and password. A printer is available for use for small print jobs of not more than 10 pages. You must provide your own paper. Paper can be purchased from the Front Desk, 50 sheets for \$2.50.

Mailboxes for all JST students are located downstairs in Montserrat Lounge. Faculty and staff mailboxes are located in the reception area. The JST student mailboxes are for campus/school mail only, including that from other GTU schools. JST will **not** accept personal USPS mail for students. Any and all outside mail (including U.S. mail, parcel, etc.) addressed to students at 1735 Le Roy Avenue may be returned to sender.

Common Lounges: On the first floor, Manresa and Compañía lounges are available for meetings, relaxing, and socializing. Students are welcome to use the adjacent kitchen. Various publications and newspapers are available in Compañía daily. Downstairs, Montserrat is a quiet room for study and computer use.

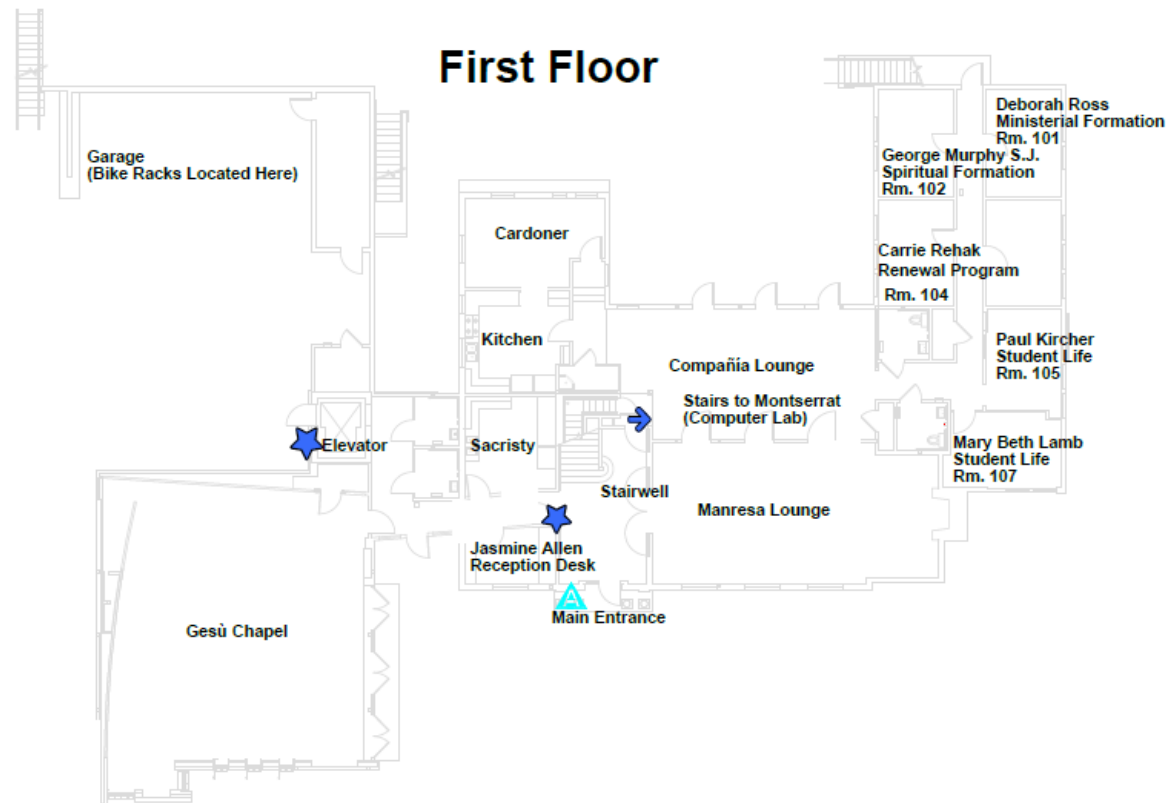
Lockers: In Montserrat, a few lockers are available for students living off campus. Sign up for one with Mary Beth Lamb, melamb@scu.edu, and bring your own lock.

Book Recycling: Near the lockers in Montserrat, a large bookcase contains books for recycling. Students are welcome to take from those shelves and to add from their own collections.

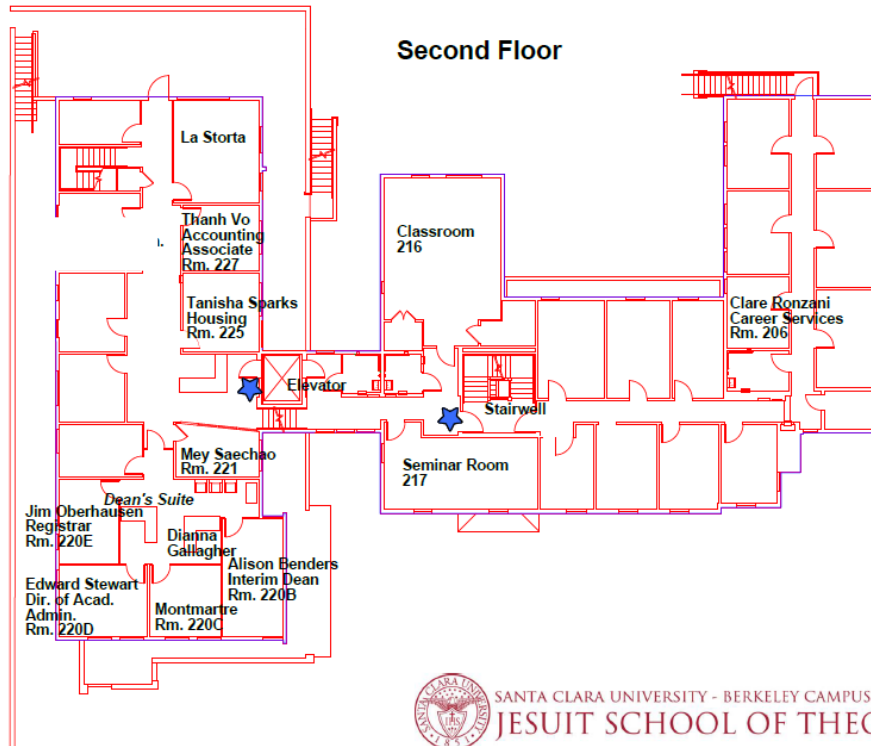
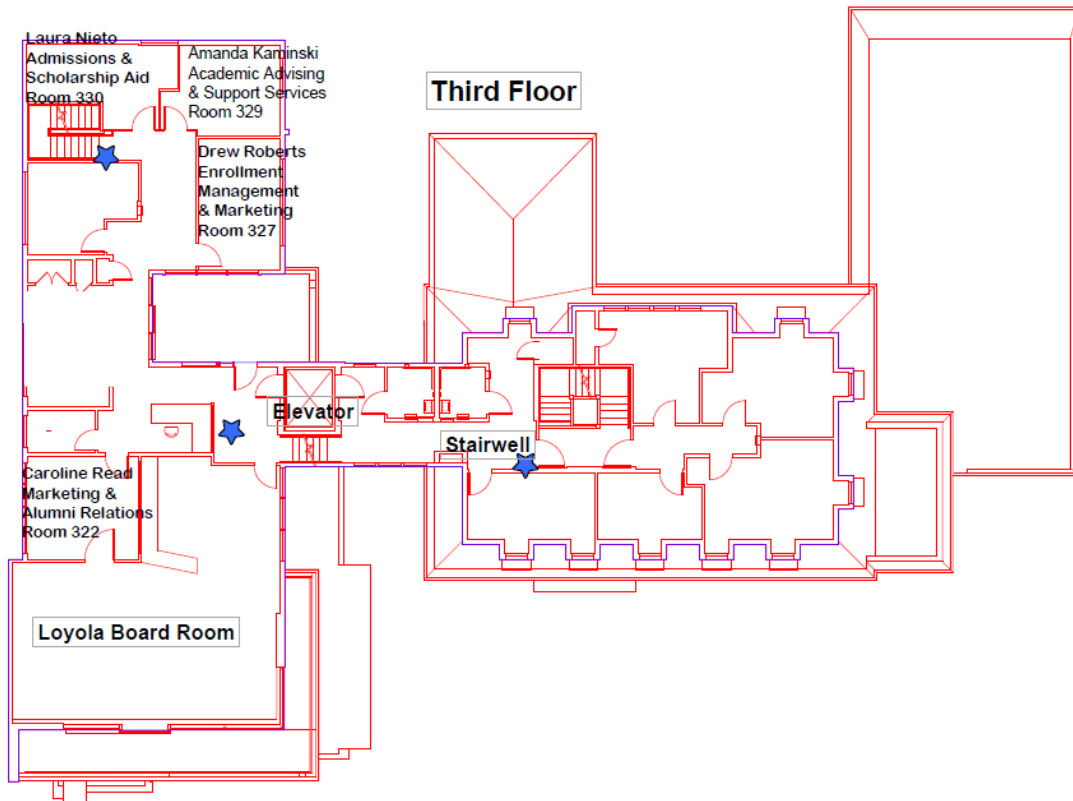
Lost and Found: A lost and found box is located at the Front Desk.

Room Reservation at JST: Members of the JST school community (school administrators, faculty, students, staff) may reserve space for JST activities, such as presentations, committee meetings and private conferences. Spaces can be reserved with the receptionist through the [online reservation form](#). Classrooms can be reserved through Mey Saechao, msaechao@scu.edu. To reserve the Chapel, contact Mary Beth Lamb at melamb@scu.edu

Map of JST



SANTA CLARA UNIVERSITY - BERKELEY CAMPUS
JESUIT SCHOOL OF THEOLOGY



Student Life and Formation

At JST, we engage the whole person, inviting students to growth through spiritual and ministerial formation, liturgy, and school community life. The Offices of Ministerial Formation, Spiritual Formation, and Student Life have jointly created a statement regarding formation at the school. Please see the [formation pages](#) on the JST website, which is a comprehensive statement on formation at the Jesuit School of Theology.

The Office of Student Life (directed by Paul Kircher, Assistant Dean of Students) creates an inclusive space of co-curricular learning and provides opportunities for growth through liturgy and school community life, through Tuesday soup suppers and other social gatherings, lectures and presentations, and other activities. The office coordinates with other member schools of the Graduate Theological Union in publicizing events and resources in the consortium so as to foster ecumenical and interfaith understanding. We coordinate with Santa Clara University offices in ensuring access to student services such as health insurance, disability resources, and mental health resources. The Student Life office addresses any issues related to student conduct. It serves as a liaison between students and the administration, communicating students' needs and concerns. We strive to cultivate a school environment that promotes healthy growth, wellness, and safety for all. For more information, see [Current Students](#) or contact Paul Kircher at pkircher@scu.edu or Mary Beth Lamb, Senior Administrative Assistant for Student Life and Formation, at melamb@scu.edu.

Student Life collaborates with the Office of Spiritual Formation (directed by George Murphy, SJ) and the Office of Ministerial Formation (directed by Deborah Ross). George Murphy can be reached at grmurphy@scu.edu and Deborah Ross may be reached at dross@scu.edu.

The following resources are available to JST students:

Spiritual Formation:

- Spiritual direction
- Faith sharing (may be initiated and led by students)
- M.Div. retreat days (these are a component of the M.Div. program)
- Lay formation retreat days and overnight retreats
- Days of prayer, for example Advent retreat days
- Pilgrimage experiences (for example, the Camino Ignaciano)
- Individually guided retreats
- SCU campus ministry retreat opportunities

Liturgical formation:

- Daily Mass
- JST community weekly liturgy on Tuesday evenings

- Liturgies with lay presiders on Thursday evenings
- Advent and Lenten Reconciliation Services
- Acolyte training

Pastoral Formation:

- M.Div. Field Education (required in the M.Div. program); placements at schools, prisons, hospitals, parishes, and various agencies
- Skills-based academic classes such as spiritual direction classes, lay presiding, pastoral counseling
- “[Bridge Courses](#)”: one-unit classes bridging academic theology with ministerial experience or connecting theology with other disciplines. Examples include: high school pedagogy, prison ministry practicum, pastoral Spanish, religion writing for a broader public.
- Skills-based workshops on topics like the Enneagram, Myers Briggs, conflict resolution, suicidal ideation
- Immersions; service opportunities
- Lay formation activities

Human Formation:

- School community life: Tuesday night suppers and other events and activities
- Lay intentional community
- Student peer mentorship
- Various GTU and SCU events
- Resources of the San Francisco Bay Area: cultural, social, recreational

Intellectual Formation:

- Academic degree program classes
- Visiting guest speakers
- “Theology ThursDei’s” – discussion and socializing led by students on Thursday evenings at La Val’s Pizza on Euclid Avenue
- Various GTU, SCU, U.C. Berkeley events

The following provides more detail on some of the resources listed above.

Spiritual Formation

Spiritual Direction: In the Ignatian tradition, spiritual direction is a core element of formation. Realizing that God’s Spirit is the primary formator, a spiritual director accompanies individuals in their search for the holy, and for spiritual integrity. Spiritual directors help students integrate their personal and professional lives in the context of prayer and reflection.

JST students in all programs are encouraged to meet with a spiritual director. Resources are offered by the school to connect students with spiritual directors, and JST financially supports direction visits with those approved by the Director of Spiritual Formation, George Murphy, S.J.

Fr. Murphy provides incoming students with a roster of spiritual directors who are familiar with professional ministry and with the school. He also invites available spiritual directors and interested students to an introductory meet-and-greet. Some of these directors donate their services, and others are given a stipend by the school. Students are free to choose a director outside this list, but they must make compensation arrangements with that director.

Small Faith-Sharing Communities: Faith-sharing takes various forms, but the key intent is to gather students in small groups to talk about their experience of God and their journey in faith. If you are interested in participating in a faith sharing group, please contact George Murphy, SJ, grmurphy@scu.edu. Information regarding faith sharing opportunities is distributed throughout the year.

For those who choose to live in a [Lay Intentional Community](#), prayer and faith-sharing occurs in that context as well. We currently have one residence for a group of lay students in the Jean Donovan Community.

Lay Formation Gatherings: Lay students are invited for two evening gatherings each semester with liturgy, a shared meal, and reflection and discussion.

Lay Formation Retreat Days and Overnight Retreats: In the spring, lay students have the opportunity to participate in an overnight silent retreat at El Retiro Jesuit Retreat Center in Los Altos. This year's retreat will be from March 13-15.

Days of Prayer: These are offered at JST during Advent and Lent.

Immersive Contextual Education: See [here](#) for more information.

Individually Guided Retreats: See George Murphy, S.J. for more information.

SCU Campus Ministry Retreat Opportunities: JST students are welcome to participate in several graduate student retreats offered by SCU. For more details, [click here](#).

Ministerial Formation

JST is dedicated to preparing future ministers for the church. Field education forms an essential component of ministerial formation at JST. Deborah Ross, Director of Ministerial Formation, directs the M.Div. field education program. M.Div. students participate in the Integration Seminar, which facilitates joint formation for Jesuit and lay students and includes theological reflection, communal experience, study, dialogue, and prayer. Second-year M.Div. degree students engage in a supervised field education experience. M.Div. students participate in

[ministerial opportunities](#) at local parishes, schools and universities, prisons, hospitals, and other agencies in the San Francisco Bay Area. JST has special relationships with St. Patrick parish, West Oakland, and San Quentin State Prison, with students regularly undertaking field education at both locations. STL and STD students engage in pastoral work as part of their degree programs under the guidance of the STL and STD Program Directors.

JST M.Div. students participate in a yearly retreat day with their cohort. The retreat provides an opportunity for students to spend time in prayer and reflection in each other's company.

The Ministerial Formation Office organizes skills-based workshops on topics relating to personal growth and development and the enhancement of ministerial skills. These workshops are open to all JST students.

Together with the Office of Student Life and the Office of Spiritual Formation, the Office of Ministerial Formation organizes formation activities for lay students at JST. Lay spiritual formation activities include an overnight retreat, March 13-15, 2020 at El Retiro Jesuit Retreat Center. Other activities will be announced each semester and will include two evening lay formation gatherings each semester for prayer, fellowship over a meal, and discussion and reflection.

In April 2018 Deborah Ross authored a [Research Report on Lay Ecclesial Formation at JST](#). The report explored opportunities to enhance lay formation at the school and the character of lay ecclesial ministry. The importance of cultivating a theology of friendship at JST and fostering collaboration between lay, Jesuit, and religious students was a theme of the Report. Please see the Report for further findings and recommendations.

Liturgical Formation

Daily Mass is offered Monday through Friday, 8:00am, Tuesday through Friday, 5:15pm, and Saturday, 8:30am. Every other Wednesday, the Mass is celebrated in Spanish (we need lectors who can read in Spanish, contact Sebastian Budinich, sbudinich@scu.edu if interested). If you would like to sign up for any other liturgical ministry during the week, also contact sbudinich@scu.edu.

The main **JST Community Weekly Liturgy** is celebrated on Tuesday evening, 5:15pm. Please contact the Liturgical Ministry Coordinator, Sebastian Budinich, (sbudinich@scu.edu) if you are interested in serving in any liturgical ministry (musician, Eucharistic minister, lector, acolyte, bread baker, and other liturgical ministries).

Liturgies with Lay Presiders: At least once a month on Thursday evenings, a lay person presides/preaches at the 5:15 liturgy. This provides an opportunity for lay students to gain experience in presiding and preaching, and gives the community an experience of different liturgical forms such as Evening Prayer, Liturgy of the Word, and Communion services. If you would like to preside or preach, contact Paul Kircher, pkircher@scu.edu.

Pastoral Formation

JST M.Div. students engage in **field education** during the second year of their degree. STL, Th.M., and STD students also participate in ministry activities as part of their degrees. Home to a multitude of cultures and pastoral needs, the San Francisco Bay area offers an abundant variety of opportunities for pastoral praxis and ministerial placements.

Skills-based academic classes such as spiritual direction classes, lay presiding, and pastoral counseling are offered.

Skills-based workshops are offered each year on aspects of personal development and ministerial skills. For more information, please contact Deborah Ross (dross@scu.edu).

Human and Intellectual Formation

Tuesday night suppers: After the Tuesday JST Community Weekly Mass each week, all are invited to a light soup and salad supper, followed by a community lecture or presentation. If you have an idea for an event, please contact Paul Kircher, pkircher@scu.edu or Mary Beth Lamb, melamb@scu.edu. The first weekly soup supper will be Tuesday evening, September 10.

Theology ThursDei's: Each Thursday evening during the school year, students from JST get together at La Val's on Euclid Avenue, to laugh and celebrate the end of the week! All are welcome to join, so come one and all! Enjoy a beverage, have good conversation, and build our school community. Theology ThursDei's start around 9pm. If interested, contact Thomas Bambrick, tbambrick@scu.edu.

Sustainability

JST makes an effort to follow sustainable practices for the sake of earth justice and climate neutrality. Everyone is encouraged to do their part to develop a culture of sustainability. SCU's Center for Sustainability offers many resources for your consideration, including a monthly [newsletter](#) with articles on camping sustainably, reducing the carbon footprint of the commute, and recognizing the justice issues around the use of electronics.

At JST, we focus on our use of paper and practices around food. You will find blue recycle bins throughout the school for paper and cardboard. Before you print or copy an article, consider whether a digital copy would suffice.

We also recycle hard plastics (not plastic bags or wrap, utensils or lids), glass (jars and bottles only), and aluminum (cans and foil) in bins located in Compañia. You will find glasses and mugs under the shelf where the coffee is located, so that paper products are not necessary. In the kitchen you will find plates, bowls, and eating utensils. When finished, please load your items into the dishwasher, after first rinsing them.

For community-wide events, we use compostable plates and cups that can be disposed of in the compost bin in the kitchen and in Compañia. Please place your food scraps there as well. Paper towels and napkins are also compostable. Unfortunately, plastic and even compostable eating utensils are not compostable in Berkeley, so they must go into the landfill bins. The paper towels in the bathrooms are also compostable, so garbage should not be placed in the paper towel bins.

Berkeley's recycling and waste management rules require that paper and cardboard be separated from plastics, glass and aluminum, and that food and water-soiled paper be placed in compost, NOT in recycling. Pizza boxes are a case in point! Non-food and water-soiled paper and cardboard should go in the blue recycle bins, not the bins labeled recycling, which are for plastics, glass, and aluminum. Our goal is to recycle and/or compost almost everything, so that the waste we send to landfill is negligible. It is even better to use non-throw away items!

If you have ideas about how we can operate more sustainably, please bring your ideas to the Sustainability Liaison, Mary Beth Lamb, melamb@scu.edu.

Disability Resources

Our JST academic building is **fully ADA accessible**. Visit the [SCU Office of Accessible Education](#) to learn more about resources that are available to persons with disabilities or to apply for an accommodation for a disability. Contact Paul Kircher, JST-SCU Assistant Dean of Students, at pkircher@scu.edu, if you need assistance in connecting with the SCU Office of Accessible Education.

Title IX

Title IX is comprehensive federal legislation prohibiting discrimination on the basis of sex in any federally funded education program or activity. All new students must take a mandatory online training in prevention of gender- and sex-based harassment, discrimination, and misconduct. The Spring 2020 deadline for finishing Part 1 is February 14; For a brochure about Title IX on campus, please click [here](#).

Communication, Social Media and Student Life

Communication: The *Magis*, a weekly newsletter, is sent by email on Fridays to inform the JST community about events within JST/SCU as well as the GTU and the broader Bay Area. Magis issues are also posted weekly [here](#). If you have items to post or a photo to submit as photo of the week, please send by Wednesday at noon to jstmagis@scu.edu. The JST event calendar is posted online [here](#). Items of interest are posted on the bulletin boards in Compañía, Montserrat, and near the front desk. Contact Mary Beth Lamb, melamb@scu.edu for permission to post flyers in these areas. Information about many events will be directly sent to your SCU email address, so be sure to check in frequently.

Social Media: You can follow JST on various forms of social media: on Twitter [@JSTSCU](#); on Instagram [@JSTSCU](#); on Facebook at [Jesuit School of Theology of Santa Clara University](#); on iTunes at Santa Clara University Jesuit School of Theology; on LinkedIn at [Jesuit School of Theology of Santa Clara University](#).

The Student Facebook group, “[JST Connect](#)”, is open to all students; simply request access from a current member. The administrator is Mary Beth Lamb, melamb@scu.edu.



Social gatherings are held throughout the year. These gatherings provide an opportunity for the JST community to come together. You don't want to miss the BBQ/supper after the opening Friday evening Mass on the first Friday of the fall and spring semesters, the Talent Show in the spring, or the Commencement Mass and reception in the spring. Such gatherings will be announced in the weekly newsletter, the *Magis*. To make a suggestion about social events, contact Mary Beth Lamb, melamb@scu.edu.

If you would like to initiate a recreational group, please contact Mary Beth Lamb at melamb@scu.edu. The following recreational groups meet at JST on a weekly basis:

Hiking Excursions: The Wildkatz meet on Saturday mornings from 8-10:30; contact Paul Janowiak, pjanowiak@scu.edu. Meet in the Hagemann parking lot at 8:00am where the Tilden Park destination for the week will be decided. Excursion ends at Peet's and Cheese Board.

Basketball: play pick-up basketball on Saturdays at 10:30am at Live Oak Park in Berkeley, between Shattuck Ave and Walnut St. Courts are located closest to the corner of Shattuck and Berryman. Contact Joshua Peters, j1peters@scu.edu, for more information.

Student Leadership: There are many opportunities for student leadership at JST, including the following:

Academic Council – Student Representatives for each degree program

JST-SCU Board of Directors Committees:

Academic Affairs

Student Life

Finance

Advancement

Lay Formation Committee

Liturgy Committee

Please contact Paul Kircher (pkircher@scu.edu) if you would like more information on serving on the above committees, or if you desire to initiate a student group.

Safety on Campus

Alert Systems: SCU Campus Alert, Nixle Alerts for JST and the surrounding area, and GTU-ALERTS are opt-in emergency notification systems available to all JST faculty, staff, and students. Alerts can be sent out via SMS Text Messaging, email, and voice messages, as deemed necessary. Campus Safety Services recommends that all students enroll in SCU Campus Alerts to receive critical information.

SCU Bronco Alert SCU Bronco Alert is the primary means by which you will be notified in the event of an emergency that affects the JST campus and surrounding area. Some examples of the types of information you might receive in an emergency include: shelter in-place or evacuation order; campus closure for any reason; avoid a certain area of campus or streets surrounding campus because of a localized emergency.

To register or update your contact information:

1. Login to MySCU Portal.
2. Enter your SCU login information (user name and password).
3. Select the "SCU BRONCO ALERT" tile.
4. Select "My Account" from the top right drop down menu to edit your contact information.

Nixle Alerts for JST and the surrounding area: Campus Safety Services is subscribed to the Nixle service and receives alerts from the University of California and Berkeley Police Departments. Depending upon the location of the alert, and the incident's possible impact on the JST campus community, the Watch Commander will determine whether to forward the alert via email to JST students, staff and faculty. If you wish to sign up independently, please navigate to <http://www.nixle.com>.

GTU-ALERTS Emergency Notification System is used to provide alerts in the event of an immediate and life threatening event or other critical situation that affects all of the GTU member schools' campuses. Visit the link above for more information and to sign up for GTU-ALERTS.

Earthquake Safety: JST is located almost directly on top of the Hayward fault, so earthquakes are a very real possibility here. When you feel the earth start to shake, **DROP** to the ground to avoid falling, **COVER** your head and neck with your hands and get under a table or desk and **HOLD ON** to help stabilize yourself. Always be sure you have not placed any items above your bed that may fall on you when you sleep. Secure heavy objects and furniture to the walls with brackets, and prepare a personal emergency kit with water, food and medicines. Keep shoes under your bed in the case that glass shatters if there is a quake at night. [This video](#) offers some ideas for how to prepare.

Wildfire Evacuation: The Office of Emergency Services helps the City of Berkeley and its people plan for, respond to, and recover from disasters. Learn more about what you can do to get ready for disasters by visiting our websites about [wildfire evacuation](#) and [all other hazards](#). Have a plan, prepare a 'go' bag and sign up for the AC Alerts system to stay current on any situations impacting our community.

Evacuation Process: In the event that you need to evacuate the building (such as in a fire), you will find maps located throughout the building indicating the nearest exits. Our rendezvous spot is located across the street at the corner of Le Roy and Le Conte, in front of Shalom House. Please wait there until permission to access the building is given.

Night Safety Services: An on-site uniformed security guard (with experience in emergency response and CPR) patrols the GTU library and nearby school buildings. The guard is on site most days, **Monday thru Thursday 6:00 pm to 11:00 pm, Friday 1:00 pm to 6:00 pm, Saturday 11:00 am to 7:00 pm, and Sunday 1:00 pm to 8:00 pm.** If you would like the guard to escort you to parking lots or other nearby locations, call (510) 649-2450 during those times.

UC Berkeley offers Night Safety Services available to GTU Students, including walk escorts and a night shuttle. They will walk you to your car, a shuttle bus, public transportation, or home if you live nearby. Call (510) 642-WALK [9255] from 6pm - 3:00 a.m. or visit BearWalk.berkeley.edu. Boundaries for the service are: Cedar (north), Derby (south), Milvia (west), and Prospect (east). For more information, see this page on the UC Berkeley website: <https://nightsafety.berkeley.edu>.

Student Employment at JST-SCU

The Jesuit School of Theology values the contribution of student employees to the mission and effective operations of the school. A number of different offices at JST employ students, helping students to finance their education while also furthering their professional development. Faculty members also employ students as research or teaching assistants, enabling students to gain significant professional experience under the guidance of their professors. Students are welcome to apply for positions as they become available. Openings are posted on the [JST Finance and Administration](#) pages under the Student Employment tab. Under this tab, students will also find forms related to student employment, and the SCU Student Policy and Procedures Manual, which outlines all policies related to student employment.

Students should coordinate with their supervisors in submitting all required paperwork during the hiring process. They may direct questions about payroll to the JST-SCU Assistant Dean of Finance and Administration.

Students may be employed up to a maximum of 19 hours a week while school is in session. They may work full-time during vacation periods. International students on the F-1 student visa may be employed at JST, once they get a social security number.

JST encourages students to communicate regularly with their supervisors about any issues they may encounter in their employment. If unable to resolve things with their supervisor, student workers may have recourse to the Assistant Dean of Finance and Administration. Students also have the option of conferring with the Santa Clara University Student Employment Manager,

Mariela Rodriguez, who can be reached at m2rodriguez@scu.edu or by telephone at (408) 554-5488.

Career Services

Popular career paths for our alumni include: campus ministry, pastoral ministry (faith formation, evangelization, social justice outreach, liturgy, music), teaching, hospital chaplaincy, restorative justice (prison/detention ministry), retreats and spiritual direction, mission identity in Catholic institutions, and work in non-profit organizations.

Our **Career Advisor**, Clare Ronzani, offers a range of career development and placement services to students and alumni/ae. She is available to meet with students privately for career advising and job search assistance. These services are available on a limited basis to recent alumni/ae. Please email Clare at cronzani@scu.edu for more details.

Employment Opportunities: For job announcements, see the [Career Opportunity Postings](#) page for links to other sites with information on career opportunities in ecclesial ministry and related fields. Students and alumni/ae may also email jstcareerservices@scu.edu to request to receive a weekly newsletter regarding employment opportunities.

Workshops and Panels: Career development workshops provide assistance with planning and implementing a job search, resume writing, networking, and interviewing. JST alumni/ae and other professionals share their experience with students in panels on ministerial and related careers.

Résumé Book: The Career Services Office circulates an electronic résumé book that we send to local employers and Jesuit Institutions throughout the U.S. who have an interest in hiring JST alums. Students are eligible to place their résumés in the book the year of their graduation. Plan to participate the year you graduate!

Job, Internship, and Grant Announcements: We often receive notification of positions, grant applications, vocational information, and calls for papers that will be posted in the *Magis* and in binders that are kept next to the Career Center Office, Room 206, and in Compañia.